

HELPING COMMUNITIES RESPOND TO

NATURAL DISASTERS



Blackwoods

13 73 23  blackwoods.com.au

ARE YOU FLOOD & FIRE READY?

When the unexpected strikes, a planned and responsive recovery effort is critical.

Blackwoods can support all your disaster recovery equipment needs. Whether it's fires, floods or storms, we've been supporting Australian communities for over 140 years. We understand what it takes to rebuild in the aftermath of a disaster. Securing equipment and mobilising assets quickly is a priority.

Preparation for the impact of a potential disaster — flooding, power loss, building damage and debris — means stocking the right products, tools and personal protective equipment (PPE).

It's important that emergency services and first responders have access to what they need immediately to kick start the recovery effort. That's where Blackwoods comes into play.

Specialised equipment and safety specialists available for immediate deployment.

A successful recovery operation demands a skilled team and resources. We're focused on providing equipment that enables communities to get back on their feet as quickly and safely as possible. Our safety specialists work to urgently assess your requirements and provide advice on the right products to support the clean-up process.

Whether it's building inspections or repairs, debris and tree removal, or restoring utilities, specific equipment is needed to keep response teams safe, including generators, PPE and tools. Stocking the right gear and recovery equipment will help get operations back online.

CONTENTS

Flood & Fire Preparedness & Protection	3
Hygiene & Cleaning	7
Electrical	9
Automotive	11
Health & Wellbeing	13
Apparel	14
Footwear	15
Site Safety	16
Head & Face Protection	18
Respiratory	18
Eye Protection	19
Hearing Protection	21
Hand Protection	21

NEED A SAFETY SPECIALIST TO SUPPORT YOUR RECOVERY EFFORTS?

Contact Blackwoods on 13 73 23 to discuss your equipment needs.

FLOOD & FIRE PREPAREDNESS & PROTECTION

PLATFORM LADDERS

Fibreglass Platform Step Ladders

- Punchlock® tread design increases torsional rigidity of the overall ladder frame
- Wide anti-slip platform (490 x 400mm)
- Multi-function handrail/accessories holder
- 900mm Handrail height from platform
- Anti-slip rubber boots for added safety, stability and protection of the stiles
- Electro-Safe™ (non-conductive)
- Complies with AS 1892:1 2018



BAILEY

Mfr No.	No. Steps	Description	Platform Height m	Reach Height m	Product Weight kg	Part Number
FS13947	4	Pro FG PF 4	1.15	3.1	12.5	0159 4009
FS13949	6	Pro FG PF 6	1.72	3.7	15.9	0159 4043

No. Steps includes the platform

CRATES & LIDS

Plastic Storage Crates

- Heavy-duty industrial storage crates
- High-strength, lightweight design
- Optional lids with fastening system
- Crates drilled to accommodate padlocks or ties for additional security

kingcraft

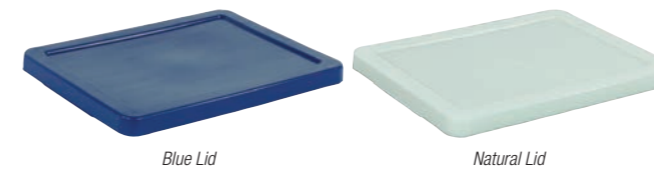


Capacity L	Width mm	Length mm	Height mm	Colour	Part Number
13.5	323	430	127	Blue	0201 6633
22	323	430	210	Blue	0201 6650
32	413	645	200	Blue	0201 6684
52	413	645	277	Blue	0201 6701
68	413	645	378	Blue	0201 6718

Plastic Storage Lids

- High strength, lightweight design
- Lids drilled to accommodate padlocks or ties for additional security
- Ideal for use with Kingcraft plastic storage bins

kingcraft



Suits	Width mm	Length mm	Height mm	Colour	Part Number
13.5 & 22L Crate	334	440	30	Blue	0201 6769
13.5 & 22L Crate	334	440	30	Natural	0201 6667
32, 52 & 68L Crate	426	658	30	Blue	0201 6752
32, 52 & 68L Crate	426	658	30	Natural	0201 6735

TARPAULINS

Tarp Trailer Cover

- Water and UV resistant
- 11 x Adjustable black bungee cords with clips to fix tarp to ute or trailer
- Easy to apply.

Polytuf
TOUGH

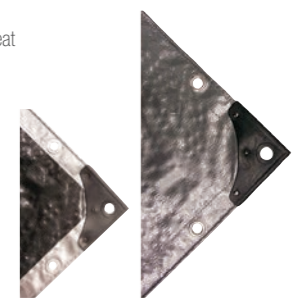


Size m	Size ft	Part Number
2.15 x 2.45	7 x 8	0416 8289

Heavy Duty Tarpaulin

- Waterproof and mildew and UV resistant for extended outdoor exposure even in strong sunlight
- Silver side to reflect heat, black side to absorb heat with heavy moulded plastic reinforced corners
- Rust free eyelets every 45cm that accept up to 12mm diameter rope
- High density woven polyethylene

Polytuf
TOUGH

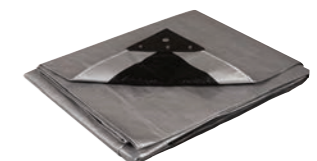


Dimensions m	Dimensions ft	Colour	Part Number
1.8 x 2.4	6 x 8	Silver/Black	0410 5133
2.4 x 3.0	8 x 10	Silver/Black	0410 5150
3.6 x 4.9	12 x 16	Silver/Black	0410 5218
4.3 x 6.1	14 x 20	Silver/Black	0411 2120
6.1 x 9.1	20 x 30	Silver/Black	0410 5371
9.1 x 9.1	30 x 30	Silver/Black	0410 5439
9.1 x 15.2	30 x 50	Silver/Black	0411 2273

Heavy Duty Tarpaulin

- Silver/Black, 160gsm
- Rubber corners for extra strength
- Laminated both sides, washable
- UV resistant
- Heat healed edge over 2mm
- Polypropylene

kingcraft

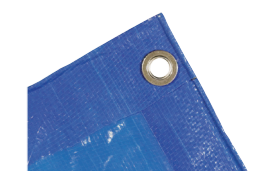


Dimensions m	Dimensions ft	Colour	Thickness	Part Number
1.8 x 2.4	6 x 8	Silver/Black	160gsm	0410 4827
2.4 x 3.0	8 x 10	Silver/Black	160gsm	0350 9256
3.0 x 3.6	10 x 12	Silver/Black	160gsm	0410 5167
4.9 x 6.0	16 x 20	Silver/Black	160gsm	0033 7637
6.1 x 7.2	20 x 24	Silver/Black	160gsm	0033 7654

Lightweight Tarpaulin

- Laminated both sides and washable
- UV resistant
- Polypropylene

kingcraft



Dimensions m	Dimensions ft	Colour	Thickness	Part Number
1.8 x 2.4	6 x 8	Blue	105gsm	0410 4793
2.4 x 3.0	8 x 10	Blue	105gsm	0029 0190
3.0 x 3.6	10 x 12	Blue	105gsm	0073 8956
3.6 x 5.4	12 x 18	Blue	105gsm	0076 7142
5.5 x 7.2	18 x 24	Blue	105gsm	0046 5596

HESSIAN & POLYPROPYLENE BAGS

Sand Bags

- Holds 15kg of sand
- Bags features side vent for easy filling and tie string for easy closing
- Ideal for use in pipe laying, controlling and directing water flow



POLESY
SINCE 1988

Material	Size mm	Part Number
Hessian	840 x 350	0414 9538
Hessian heavy-duty	840 x 350	0043 5556
Hessian	735 x 460	0070 5177
Woven Polypropylene (PP)	760 x 460	0471 8956

TAPES

Gorilla Duct Tape

- Double thick adhesive layer for a superior hold on smooth and uneven surfaces
- Tough reinforced backing for strength and cleaner tears
- Water resistant shell withstands moisture, UV rays and temperature changes
- Adhesive and backing do not separate
- Suitable for indoor and outdoor use



Width mm	Length m	Colour	Part Number
48	32	Black	0038 0209
48	32	Silver	0038 0243

Gorilla Repair Tape

- Heavy duty extra thick adhesive layer for a superior hold
- Versatile and works underwater with an air tight seal
- Weatherproof, water, UV and temperature resistant
- Crystal clear finish that will not yellow over time
- Flexible stretch tape with serrated edges for easy tear
- Suitable for indoor and outdoor use



Width mm	Length m	Colour	Part Number
48	8	Clear	0038 0124

SYNTHETIC ROPES

Polypropylene Green Rope

- Tough, extremely strong and easy to work and knot
- UV stabilised with excellent weathering properties
- Suitable for a range of industrial areas, particularly marine, construction, mining, rural, commercial fishing and petroleum

Bullivants



Dia. mm	Min. Breaking Force kN	Length m	Type	Part Number
10	15.3	250	Coil	0844 9919

DIAMOND BLADES & CUP GRINDING WHEELS

Rescue Runner

- Special tempered steel core design
- Revolutionary new diamond blade technology
- Symmetrical diamond layer pattern allows blade to cut effectively in either direction
- Longer life and faster cutting
- Suitable for building, construction and emergency services
- Ideal for cutting concrete, natural stone, bricks, steel shutters, automotive steels, steel pipes, thin steel plates, rubber tyres, plywood, narrow timbers, vinyl materials, plastics, fibreglass materials, graphite materials, ductile pipes and standard glass



Diameter mm	Bore mm	Segment Height mm	Part Number
300	20	3.5	0081 8184
341	25.4	3.6	0785 4432

SHOVELS

Dee Handle Shovels – Fibreglass

- Super strong fibreglass handle with rubber grip
 - One piece blade and socket made from specially heat treated, heavy gauge, high grade carbon steel for greater strength
 - Durable powder coat finish on 2.0mm blade thickness
- Round Mouth**
- Pointed blade gives easier penetration
 - Full width tread on blade for easy digging
 - Ideal for digging, loading and shovelling loose materials such as gravel
- Square Mouth**
- Small head ideal for mixing concrete; head will fit inside portable concrete mixer
 - Ideal as a general purpose contractor shovel, suited to heavy duty shovelling out and refilling trenches, spreading soils, sand and gravels



Mfr No.	Description	Size	Blade Width mm	Blade Depth mm	Overall Length mm	Part Number
SRMM-DHF	Round mouth	Medium	240	290	985*	0356 4057
SSMM-DHF	Square mouth	Medium	240	285	1030*	0356 3938

*Colour and size may vary

Dee Handle Shovel – All Steel

- Lightweight, all steel construction
- Blade easily fits inside most concrete mixers
- Extra long handle: 900mm



Mfr No.	Description	Size	Blade Width mm	Blade Depth mm	Overall Length mm	Part Number
SSMM-DHST	Concretors shovel	Medium	245	295	960*	0010 0946

*Colour and size may vary

Long Handle Shovels – Timber

- Solid timber handle
- Tread to allow extra foot pressure
- High carbon steel blade: 2.0mm thick
- Collared neck for extra strength and support
- Round mouth ideal for shifting, loading and digging compact or loose materials
- Square mouth ideal for shovelling and refilling trenches, spreading gravel, sand and soils



Mfr No.	Description	Size	Blade Width mm	Blade Depth mm	Overall Length mm	Part Number
SSMS-LHT	Square mouth	Small	235	265	1420*	0648 8601
SSMM-LHT	Square mouth	Medium	235	295	1580*	0648 8652

*Size may vary

Long Handle Shovels – Fibreglass

- Tread to allow extra foot pressure
- High carbon steel blade: 2.0mm Thick
- Rubber grip for greater control and comfort
- Collared neck for extra strength and support
- Round mouth ideal for shifting, loading and digging compact or loose materials
- Square mouth ideal for shovelling and refilling trenches, spreading gravel, sand and soil



Mfr No.	Description	Size	Blade Width mm	Blade Depth mm	Overall Length mm	Part Number
SRMM-LHF	Round mouth	Medium	220	290	1485*	0648 8533
SSMM-LHF	Square mouth	Medium	240	285	1540*	0648 8550

*Colour and size may vary

Long Handle Shovels – Timber

- Solid timber handle
- Tread to allow extra foot pressure
- High carbon steel blade: 2.0mm thick
- Collared neck for extra strength and support
- Round mouth ideal for shifting, loading and digging compact or loose materials
- Square mouth ideal for shovelling and refilling trenches, spreading gravel, sand and soils



Mfr No.	Description	Size	Blade Width mm	Blade Depth mm	Overall Length mm	Part Number
SRMM-LHT	Round mouth	Medium	220	295	1510*	0648 8635

*Size may vary

SUBMERSIBLE PUMPS

Submersible Sump Pumps

DOMO Series

- Stainless Steel submersible pump with multiple impellers and float switch for clean water use
- Pump is capable of a maximum head of 40m, which is suitable for in-tank installation for double storey homes
- Can also be used with an electronic controller for pressure system applications
- Suitable for domestic/residential use and garden water supply

SUMP MATE

- Dirty water submersible pumps are your go-to for draining after flooding, general irrigation, liquid transfer and many other applications where the water is dirty or considered 'grey'
- Fully submersible to 7m, these pumps are capable of passing solid non-abrasive debris up to 35mm without clogging
- Features complete automatic operation via the float switch, ensuring pump never runs dry and will not overheat

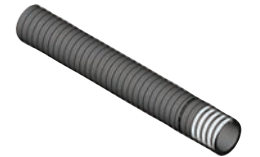


Description	Power	Application	Voltage	Part Number
DOMO Series	1.00HP/0.75kW	Clean water	240	0009 1719
SUMP MATE	1.00HP/0.75kW	Dirty water	240	0009 1685

Hose Kit for Pumpmaster - Clean Water Submersible Pump 0.75KW/240V



- Hose Kit suitable for Pumpmaster - Clean Water Submersible Pump 0.75KW 240V.
- Kit includes 1 x 20m Hose, 1 x 1" BSP Hose Tail Adaptor and 1 x Hose Clamp



Mfr No.	Part Number
AUS025G020DW	0178 7792

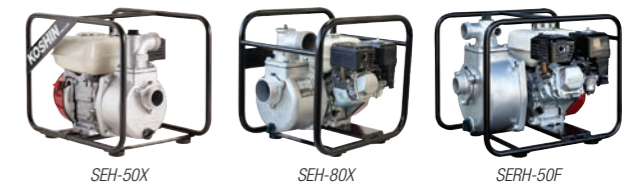
*Please contact our Sales Representatives for additional Hose Kits for other Koshin Engine Driven Pumps

ENGINE DRIVEN PUMPS

Water Transfer



- 'FLOWMATE' & 'FIREMATE' series are rugged and durable clean water transfer pumps.
- HONDA powered, compact and portable units deliver good flows and heads
- All units are mounted in heavy duty roll frames with anti-vibration mounts and are supplied with complete nut/tails, strainer and an engine tool set
- Ideal for farm use, tank to tank transfer, irrigation, fire fighting and storm water drainage applications



Model	HP	Max. Head m	Max. Flow L/min	Part Number
SEH-50X	4.5	30	600	0077 8859
SEH-80X	6.5	27	1100	0077 8876
SERH-50F	6.5	57	440	0077 8893

Hose Kit for Pumpmaster - Engine Driven Pump



- Hose Kit suitable for - Pumpmaster - Engine Driven Pump.
- Flow Max (L) 600 Head Max (M) 30.
- Kit includes 1 x 6m Suction Hose, 2 x 10m of 25mm Discharge Hose, 2 x Fire-Fighting Nozzles, Hose Adaptors and Hose Clips



Mfr No.	Description	Part Number
FK6B	Fire Hose Kit 6m Suction + 2 Adaptors	0178 7775

*Please contact our Sales Representatives for Dirty Water Pump Hose Kits

DO YOU NEED HOISING FOR YOUR PUMPS?



Please see supplementary hose kits for all your water displacement needs

PORTABLE INDUSTRIAL GENERATORS

Portable Petrol Industrial Generators

- All power ratings declared using a 1.0 power factor
- 230V/15A – 10A Power outlets
- IP66 Rated power outlets
- Heavy duty tubular steel frame
- RCD and circuit breaker for increased user safety
- AVR Technology for smooth supply of electricity
- Fold out handles and wheels for easy transport on DXGN models
- LED Data display shows servicing intervals on all DXGN models
- Suitable for commercial job site applications

DXGC4150I

- Starting: 4,150W; Running: 3,400W

- Starting: 8,250W; Running: 6,600W

- Starting: 6,875W; Running: 5,500W

- Starting: 8,950W; Running: 7,200W



DXGN8950I



DXGN6875I



DXGC8250I & DXGC8250EI



DXGN8950IK

Mfr No.	Fuel/Starting	Engine Type	Industry Rating kVA	Max Output W	Mass kg	Part Number
DXGN8950I	Petrol	420cc	8.95	8950	96	0079 4346
DXGC4150I	Petrol	196cc	4.1	4150	49	0146 0525
DXGC8250I	Petrol	389cc	8.2	8250	81	0146 0542
DXGC8250EI	Petrol	389cc	8.2	8250	83	0146 0559
DXGN6875I	Petrol	420cc	6.87	6875	83.5	0079 4329
DXGN8950IK	Petrol with battery	420cc	8.95	8950	98.5	0079 4363

Portable Petrol Inverter Generators

- All power ratings declared using a 1.0 power factor
- 230V/15A Power outlets
- IP44 Rated power outlets
- 12V DC Socket
- ECO Mode reduces rpm for optimal fuel usage
- LED Colour display shows fuel and power usage
- Inverter technology for powering the most sensitive devices
- Suitable for light trade/domestic applications

DXIG2200

- Starting: 2,200W; Running: 1,800W

DXIG3600E

- Starting: 3,600W; Running: 3,200W



DXIG2200



DXIG3600E

Mfr No.	Starting	Engine Type	Industry Rating kVA	Max Output W	Mass kg	Part Number
DXIG2200	Pull	79cc	2.2	2200	22.5	0079 4380
DXIG3600E	Electric & pull	212cc	3.6	3600	43	0146 0576

Diesel Generators

- Industry rated diesel engines
- Single phase and three phase options
- Worksite approved full roll over cage and weatherproof IP rated outlet assembly with RCD option

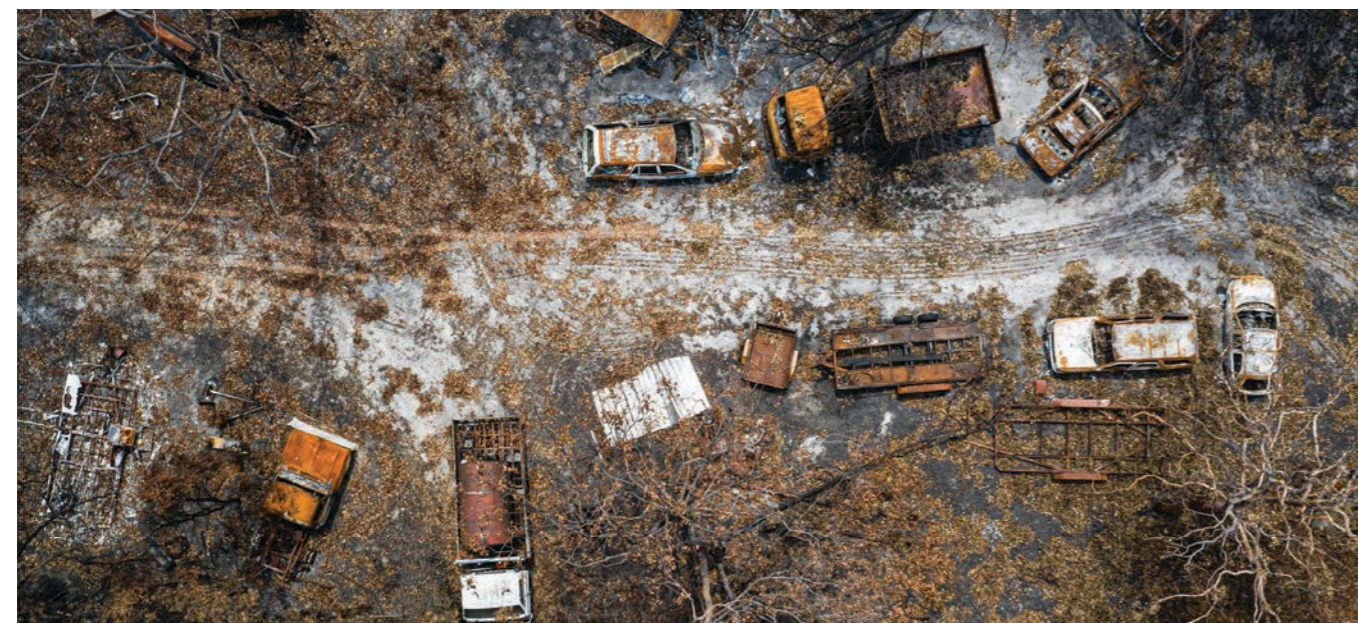


PYD033



PYD070E24000

Mfr No.	Fuel/Starting	Engine Type	Industry Rating kVA	Real Power W	Mass kg	Part Number
PYD070E	Diesel/Electric & recoil	L100 Yanmar	7.0	6000	105	0818 9740
PYD033	Diesel/Recoil	L48 Yanmar	3.3	2600	80	0281 4953
PYD033E	Diesel/Electric & recoil	L48 Yanmar	3.3	2600	85	0281 4970
PYD070E24000	Diesel/Electric & recoil	Yanmar 10hp single cylinder	7.0	6000	105	0404 8031



HYGIENE & CLEANING

MOP HEADS

Mop Refills

- Suitable for all industries
- Fibres are stitched prior to clamping to ensure strength and integrity
- Blended fibres for maximum absorption
- 25mm thread attachment included
- Suits 150cm aluminium colour coded handles

Aluminium Mop Handles

- Colour coded to meet industry standards
- 25mm Thread
- Suits 400gm mop heads



12041



12045

Mfr No.	Description	Colour	Weight g	Part Number
12041	Mop head	Blue	400	0404 1452
12043	Mop head	Red	400	0404 1486
12040	Mop head	Yellow	400	0404 1435
12042	Mop head	Green	400	0404 1469

Mfr No.	Description	Colour	Size	Part Number
12045	Mop handle	Blue	150cm x 25mm	0404 1520
12046	Mop handle	Green	150cm x 25mm	0404 1537
12047	Mop handle	Red	150cm x 25mm	0404 1554
12044	Mop handle	Yellow	150cm x 25mm	0404 1503

BUCKETS & PAILS

Plastic Mop Bucket

- Heavy duty plastic bucket
- Plastic wringer mechanism
- Non-slip foot wringer pedal
- 16L Bucket includes four rolling castors for easy movement while in use
- Available in colours suitable for the cleaning industry colour code guide
- Suitable for all industries



Mfr No.	Description	Colour	Size L	Part Number
12115	Mop bucket – Plastic wringer	Blue	16	0404 1792
12116	Mop bucket – Plastic wringer	Red	16	0404 1826
12118	Mop bucket – Plastic wringer	Yellow	16	0404 1775
12117	Mop bucket – Plastic wringer	Green	16	0404 1809

Plastic Bucket

- Plastic bucket with plastic hand grip



Mfr No.	Description	Colour	Size L	Part Number
SAB37028	Spout bucket	Black	9.6	0424 5900

Galvanised Bucket

- Plastic handle grip for comfort
- Suitable for both commercial and domestic applications



Mfr No.	Description	Colour	Size L	Part Number
02436312	Bucket with plastic handle	Galvanised	9	0243 6312

BROOM HEADS & HANDLES

Tradesman Brooms

- Complete with 1.47m x 25mm powder coated steel handle
- Fluorescent yellow for improved visibility
- Ergonomic comfort grip on handle

Medium Stiff

- Medium stiff dual fill Polypropylene (PP) bristles
- Stiff yellow inner fill picks up small and medium sized particles
- Outer soft black fill ideal for collecting dust and dirt
- Designed for wet or dry, rough or uneven surfaces – Timber, bricks and concrete
- Suitable for facilities in building and construction, mining, healthcare, educational and agricultural industries

Extra Stiff

- Extra stiff PP bristles
- Suitable for local government, councils and schools
- Ideal for wet or dry, rough or uneven surfaces, gravel/stone roads and paths



Mfr No.	Colour	Description	Overall Length mm	Part Number
164747	Yellow	Medium stiff broom w/ handle	450	0846 3389
164748	Yellow	Medium stiff broom w/ handle	600	0846 3406
164749	Yellow	Extra stiff broom w/ handle	450	0846 3372
164750	Yellow	Extra stiff broom w/ handle	600	0846 3355

NEED A SAFETY SPECIALIST TO SUPPORT YOUR RECOVERY EFFORTS?



Contact Blackwoods on **13 73 23** to discuss your equipment needs.

Sweep Eze Platform Brooms

- Blend of java fibre, coco fibre and synthetic blend bristles
- Suits 25mm timber or aluminium handle
- Fibre blend models complete with 1.5m x 25mm timber handle, reinforced with metal bracket
- Suitable for smooth concrete and timber floors in factories and workshops
- Ideal for medium duty use



Mfr No.	Description	Overall Length mm	Part Number
164695	Blended fibre broom – Handled	350	0595 7079
164698	Blended fibre broom – Handled	450	0413 4102
164700	Blended fibre broom – Handled	600	0137 5749
164702	Blended fibre broom – Handled	750	0413 4119
164704	Blended fibre broom – Handled	914	0137 5715

Broom Handles



Mfr No.	Description	Size	Part Number
164676	Aluminium thread & end cap broom handle	1.50m x 25mm	0052 9286
164685	Composite bamboo & timber broom handle with a lacquer finish	1.80m x 25mm	0063 1201
164972	Aluminium telescopic extension broom handle	3.65m x 30mm	0228 3703

All parts and accessories available, contact your Blackwoods account manager to find out more

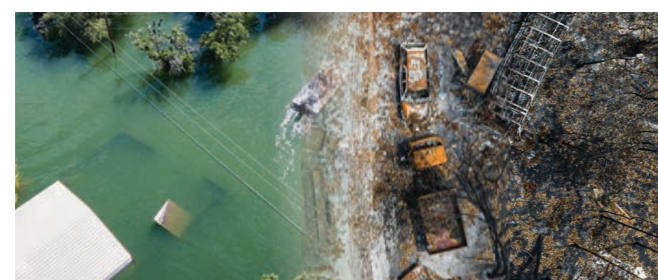
PEST CONTROL

Airborne & Surface Insecticides

- Kills crawling insects fast on contact and keeps killing for up to four weeks
- Ideal for use on crickets, silverfish, cockroaches, spiders and ants



Mfr No.	Description	Size	Part Number
688182	Raid® one shot crawling insect killer residual	450g Aerosol	0119 6994



Insect Repellents

Aerogard® Tropical Strength

- 6hrs Protection against mosquitoes
- Repels flies, sandflies, leeches, ticks and other annoying and biting insects

Aerogard® 40% Deet

- Highest strength insect repellent with 40% deet
- Heavy duty aerosol spray that is specifically formulated for long lasting protection in areas of intense insect activity



Mfr No.	Description	Size	Part Number
0050480	Aerogard® tropical strength	150g Aerosol	0946 7110
0327709	Aerogard® tropical strength	300g Aerosol	0946 7217
3011284	Aerogard® 40% deet	150g Aerosol	0334 7835
3011285	Aerogard® 40% deet	300g Aerosol	0308 7361

Mortein® Naturegard Control Bomb



- Do it yourself product to kill infestations of cockroaches, fleas, spiders, silverfish, carpet beetles, moths and ants in the home
- No unpleasant residual odour
- Unique formulation containing fenoxycarb also kills flea eggs and prevents re-infestation for up to three months by breaking the flea breeding cycle
- Suitable for kitchens, bedrooms, attics, garages, caravans, sheds and under floor areas



Mfr No.	Description	Size	Part Number
8080166	Mortein® Control Bomb – Odourless	3 x 125g Pack	0334 7886

HAND ATOMISERS SPRAYERS

Trigger Sprayer

- Plastic spray bottle with trigger
- Adjustable spray tip, comfortable grip and pull trigger for fast and efficient operation
- Lightweight
- Ideal for watering plants and general household cleaning



Description	Capacity ml	Part Number
Spray Bottle	500	0441 3305

ELECTRICAL

TORCHES & HEADLAMPS

Solidline S Series Torches

- ST7**
- 360lm Output (on boost mode)
 - 180m Beam distance
 - Up to 30hr run time (on low setting)
 - 3 x AAA Alkaline batteries
- ST7R**
- Small and compact
 - 1000lm Output (on boost mode)
 - 300m Beam distance
 - Up to 40hr run time (on low setting)
 - 1 x 18650 2500mAh Li-Ion rechargeable battery
 - Compatible to use CR1213 Alkaline batteries



ZL502213



ZL502214

Mfr No.	Description	Lumens	Part Number
ZL502213	ST7 - Aluminum Torch	360	0121 9618
ZL502214	ST7R - Rechargeable Torch	1000	0121 9635

H5R Core Head Lamp

- 500lm lumens (Boost)
- 200m beam distance (Boost)
- Fully rechargeable – 1 Li-on 1800mAh battery pack
- Runtime: 2h (Power) – 50h (Low Power)
- IP67 rated
- Advanced Focus System



Mfr No.	Description	Lumens	Part Number
ZL502121	Industrial Head Lamp	500	0136 0106

LED Head Lamp

- 200 Lumens
- 50m Beam distance
- 50 Hour run time
- 3 x AAA Batteries included
- Silicon non-slip headband for helmet use
- IPX4 water resistance



Mfr No.	Description	Lumens	Part Number
HDBIN32	Industrial Head Lamp	200	0033 1572

Batteries – Max Plus

- For demanding devices and work tools
- Available in bulk packs (AA/AAA) for professional use
- Made to last not to leak – No damaging risks for devices and work tools
- Reliable and resistant – 12 Years shelf life (AA/AAA)



Mfr No.	Size	Voltage	Carton Qty	Part Number
X91DP24	AA	1.5	24	0364 0881
X92DP24	AAA	1.5	24	0364 0898
E302286000	C	1.5	12	0087 6915
E302285900	D	1.5	12	0087 6932
E302285900	9V	1.5	12	0087 6949

PORTABLE LIGHTING

Rechargeable Worklight

- Low, medium, high and flashing lighting modes
- Rechargeable battery
- Car charger and 240V adaptor included
- IP44 rated



Description	Power W	Lumens	Part Number
Rechargeable worklight	360	700	0368 5574

LED Torches

- 200 Lumens light output
- 200m Beam distance
- 65hr Runtime
- Tough, waterproof, floats
- Suitable for camping and work sites



Mfr No.	Colour	Lumens	Part Number
DOLLNGVQ	Orange	200	0351 2735
DOLLNGV	Yellow	200	0351 2752

LED Worklights

- Built-in power bank supplies power for mobile phones and other devices
- Remote control option via LEDLENSER® pro connect app
- IP54 rated



Description	Mass g	Lumens	Part Number
iW5R Worklight	168	300	0023 7851

NEED A SAFETY SPECIALIST TO SUPPORT YOUR RECOVERY EFFORTS?



Contact Blackwoods on **13 73 23** to discuss your equipment needs.

POWERBOARDS & EXTENSION LEADS

Industrial IP66 Single Phase

- Four auto switched outlets
- 1.8m Braided lead
- IP66 rated
- Suitable for construction sites and industrial applications



Mfr No.	Voltage	Amps	No. Outlets	No. Pins	Pin Type	Part Number
RB4-10	240	10	4	3	Flat	0404 3611
RB4-15	240	15	4	3	Flat	0404 3628

Industrial Powerboards

- Portable power device with RCD/MCB protection
- 30mA Sensitivity
- Suitable for workshops
- IP33 rated



Mfr No.	Voltage	Amps	No. Outlets	No. Pins	Pin Type	Part Number
485P4CB30-EO	240	10	4	3	Flat	0188 9953
485P4CB15/30-EO	240	15	4	3	Flat	0404 3628

Heavy Duty Extension Lead

- Heavy duty 10A cable
- Moulded 10A plug and skirted socket
- Neon indicator in socket for added safety
- Suitable for workshop applications



Length	Amperage	Cable	Part Number
20	10	3 Core x 1.0mm ²	0523 2942

Braided Extension Lead

- Earth screened extension lead
- Triple insulated 1.5mm braided flex
- Braid shield earthed for added protection
- IP66 Plug and socket
- Suitable for use in workshops, construction and mine site applications



Length	Amperage	Cable	Part Number
20	10	3 Core x 1.0mm ²	0027 0321

Extra Heavy Duty Extension Lead

- Extra heavy duty 10A (red) and 15A (blue)
- Moulded clear plug and skirted socket
- Neon indicator in socket for added safety
- Suitable for heavy duty use
- Ideal for trade, workshop and garage applications



Colour	Length m	Amperage	Cable	Part Number
Red	20	10	3 Core x 1.5mm ²	0523 0805
Blue	20	15	3 Core x 1.5mm ²	0983 7499

FANS & AIR CONDITIONERS

Industrial Floor Fans

- Three speed settings
- Vertical tilt adjustment
- Long life bearings
- Non slip 'U' shape metal base
- Suitable for circulating air in offices, factories and warehouses



Description	Diameter mm	Finish	Power W	Amps	Part Number
Floor fan	450	Chrome	165	10	0149 4936

Industrial Pedestal Fans

- Three speed settings
- Vertical tilt adjustment
- Fixed or adjustable oscillation
- Suitable for circulating air in offices, factories and warehouses



Description	Diameter mm	Finish	Power W	Amps	Part Number
Pedestal fan	750	Chrome	240	10	0827 4281

Industrial Drum Fans

- Two speed operation
- 360° Adjustable head
- Built for endurance and extended performance
- Suitable for factories and warehouses
- Ideal for air circulation or dust/smoke extraction in large areas



Mfr No.	Power W	Voltage	Dia. mm	Part Number
SFDC-600T	250	240	600	0416 8493
SFDC-900T	450	240	900	0416 8527

INDUSTRIAL CARPET DRYER

Industrial Carpet Dryer

- Robust construction
- Three speed settings
- 5m Long cable
- Ideal for drying, air moving and janitorial needs



Mfr No.	Air Flow Max. L/sec	Motor W	Voltage	Part Number
ICD-520	694	520	220 - 240	0322 6387

ELECTRONIC INSECT PROTECTION

Insect Killers – Bug Zapper

- Robust and stylish weatherproof casing
- Vertical grid means dead bugs drop directly from the unit, resulting in the need for less cleaning
- All round weatherproof solution for small yards and entertaining spaces
- Tested and certified to Australian/New Zealand electrical safety standards



Mfr No.	Wattage	Dimensions mm	Part Number
GKOBZ10	10	W140 x H260 x D140	0341 6906
GKOBZ20	20	W327 x H140 x D140	0237 6570
GKOLT40	40	W370 x H215 x D215	0237 6587
GKOLT50	50	W242 x H414 x D242	0341 6940

AUTOMOTIVE

BATTERIES & ACCESSORIES

Century Hi Performance 4WD Battery

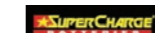
- Designed and built in Australia to suit the harshest conditions
- Platelock™ technology for superior vibration and impact resistance
- Specialised plate design for added strength, endurance and durability
- Sealed maintenance-free design for reduced water loss and longer service life



Mfr No.	Positive Terminal	Part Number
N70ZZ	Right	0025 3882
N70ZZL	Left	0025 5684

MF95D31R GoldPlus 4WD Truck Battery

- Maintenance-free automotive batteries designed using advanced Expanded Grid Technology (EXG)
- Suitable for tough Australian driving conditions
- Offers a range of applications for Japanese, American and European vehicle models



Mfr No.	AH/Assy	Part Number
MF95D31R	95/D	0171 6392
MF95D31L	95/C	0171 6409

Jump Starters

- Safety LED (flashing green) indicator fitted to confirm when ANTIZAP® is operational
- Safety LED (red) indicator is fitted to indicate a visual warning that the clamps have been reverse connected to the battery, which will illuminate and produce warning buzzer sound
- Clamps are protected from arcing when unit is in the off position
- ANTIZAP® voltage, current surge and spike are protected even when the unit is switched in the off position
- Moulded polycarbonate case, drop tested to 1m
- Suitable for commercial heavy duty industrial applications

Mfr No.	Description	Voltage	Battery Type	Output (CCA)	Weight kg	Dead Start	Part Number
RA3800	Professional jump starter	12/24	Lead acid	1000@12V, 500@24V	20.4	No	0217 4682

RADIOS

Handheld Two-way Radios

- Compact and lightweight design
- Up to 14hrs battery life (per radio)
- USB multi-charging
- Rotary power/volume control for easy operation
- 2/0.5W Switchable transmission power
- 5/1W Switchable transmission power
- Rugged design, IP67 ingress protection
- Up to 30hrs battery life
- Built-in LED torch
- Improved scan speed
- Rotary power/volume control for easy operation



Mfr No.	Description	Part Number
TX677QP	2W Handheld radio – Quad pack	0008 9883
TX6160TP	5W Handheld – Twin Pack	0417 8744
BCV007	Radio vehicle charger to suit TX6160TP	0347 5199

Jump Starters

- Recharge your personal devices on the go, like smartphones, tablets and e-watches – Up to six smartphone recharges
- Power 12V devices anywhere, like tire inflators and power inverters
- Battery type: 12V Lead-acid batteries



Mfr No.	Peak Amps	Internal Battery	LED Flashlight Lumens	Weight kg	Part Number
GB70	2000	56Whr Li-Ion	400	1.9	0117 0505
GB150	3000	88Whr Li-Ion	500	2.9	0117 0522

Jumper Lead

- High grade fuel, acid and chemical resistant insulation
- Fully insulated, pressed metal, heavy duty clamps
- Manufactured from high quality oxygen free cable
- Heavy duty carry bag included
- Suitable to safely jump start all automotive, marine, 4WD's, trucks and agricultural vehicles



Mfr No.	Peak Amps	Length m	Cable mm ²	Gauge	Voltage	Part Number
MA654AZ	1000	4	65	00	12/24	0372 5132



HEALTH & WELLBEING

SUNSCREENS

Hamilton Sunscreens

- SPF50+ Very high protection sunscreen
- UVA and UVB Broad spectrum, four hours water resistance
- Fast absorbing, dry touch technology
- Ideal for the body and face



Mfr No.	Description	Size	Part Number
7228	Active Family SPF50+ sunscreen lotion	125ml	0253 0135
7241	Active Family SPF50+ sunscreen spray	200ml	0344 1488
7230	Active Family SPF50+ sunscreen lotion	1L	0279 8650

Always read the label. Follow the directions for use. Reapply frequently. Avoid prolonged sun exposure and wear protective clothing, hats and eyewear when exposed to the sun.

Ultra Protect Sunscreens

- SPF 50+
- 4hr Water resistant
- Fast absorbing and dry touch
- UVA and UVB broad spectrum protection
- Ideal for outdoor activity
- TGA Listed – AUST L 314149
- Complies with AS/NZS 2604:2012



Mfr No.	Description	Size	Part Number
UP5CL60	Sunscreen SPF50+	60g Clip on	0293 3341
UP5100	Sunscreen SPF50+	100g Tube	0240 2193
UP5250S	Sunscreen SPF50+	250ml Trigger	0240 2227
UP5500P	Sunscreen SPF50+	500ml Pump	0267 8626
UP51LP	Sunscreen SPF50+	1L Pump	0333 2212

Ultra Protect Sunscreen with Insect Repellent

- 2 in 1 SPF50+ Sunscreen and insect repellent
- Broad spectrum UVA & UVB protection



Mfr No.	Description	Size	Part Number
UP5IR125	Sunscreen SPF50+ insect repellent	125ml	0262 6640
UP5IR1LP	Sunscreen SPF50+ insect repellent	1L	0262 6657

Lip Balm

Ultra Lip Balm SPF50+

- Ultra protection from sun, dryness and cold
 - SPF50+ Broad spectrum very high sun protection
 - Moisturise dry and chapped lips
- #### Five Way Lip Protection SPF20
- Protect and moisturise
 - Defend against nature's harshest conditions, wind, dryness, cold, heat and sun
 - SPF20 Broad spectrum medium sun protection



Mfr No.	Description	Size	Part Number
31142	Ultra lip balm – Carded	4.25g	0370 8473

Always read the label. Follow the directions for use. Reapply frequently. Avoid prolonged sun exposure and wear protective clothing, hats and eyewear when exposed to the sun.

KITCHEN SUPPLIES

Stainless Steel Drink Bottles

- 100% Food grade stainless steel
- Chip resistant coating
- Sturdy construction
- Great way to keep hydrated
- Ideal for hot and cold drinks



Mfr No.	Lid Type	Colour	Size	Part Number
XK1003124	Café cap	Stainless insulated	12oz	0006 0575
XK1003132	Café cap	Stainless insulated	16oz	0006 0558
XK1003143	Café cap	Stainless insulated	20oz	0006 0541

HYDRATION

Sqwincher® Liquid Concentrate

- Electrolyte enhanced beverage for effective hydration
- Low sodium, caffeine free and gluten free
- Great taste for increased fluid consumption
- 2L Bottle mixes to 20L of Sqwincher®
- Pump for easy dispensing (pump sold separately)
- Suitable for outdoor and indoor work, large teams and ps, prolonged activity in hot weather and extreme thermal conditions
- Ideal for use at water coolers and hydration stations
- Certified for the Global Standards of Food Safety
- BRC Site Code: 1469242



Mfr No.	Flavour	Size L	Std Pack	Part Number
SQ0028	Lemon lime	2	6	0315 4289
SQ0042	Orange	2	6	0315 4272
SQ0046	Wildberry	2	6	0486 3809
SQ0047	Tropical cooler	2	6	0592 5238

Sqwincher® Qwik Stiks®

- Electrolyte enhanced beverage for effective hydration
- 99.5% Sugar free for zero calories
- Low sodium, caffeine free and gluten free
- Great taste for increased fluid consumption
- Add one sachet into a 600ml drink bottle with water, shake and drink
- Convenient single serve packaging for portion control
- Fits in pockets for mobile workers
- Suitable for portion controlled dispensing, minimising waste and mobile workers in extreme environments
- Ideal for use at water coolers and hydration stations
- Certified for the Global Standards of Food Safety
- BRC Site Code: 1469242



Mfr No.	Flavour	Std Pack	Part Number
SQ0104	Mixed flavours	50	0062 0729

Sqwincher® Squeeze Frozen Pops

- Industrial pack
- Electrolyte enhanced ice block for effective hydration
- Low sodium, caffeine free and gluten free
- Great taste for increased fluid consumption
- Frozen format helps cool down core body temperature
- Ready to eat when frozen
- Convenient single serve packaging for portion control
- Suitable for portion controlled dispensing, minimising waste and mobile workers in extreme thermal environments
- Ideal for use at water coolers, hydration stations and shaded rest areas
- Certified for the Global Standards of Food Safety
- BRC Site Code: 1469242



Mfr No.	Flavour	Std Pack	Part Number
SQWPX002	2 x Lemon lime, 2 x Mixed berry, 2 x Grape, 2 x Cherry, 2 x Orange	10	0226 6975

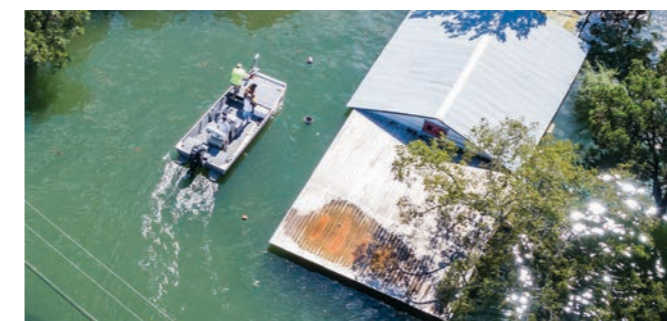
PERSONAL HYGIENE

Odor-Eaters Foot Powder

- Destroys foot odours
- Absorbs sweat
- Keeps feet drier, fresher and more comfortable



Mfr No.	Description	Size	Part Number
5808	Odor-Eaters foot & shoe powder	100g	0251 5702



FOOD & DRINK STORAGE

Cooler Jugs

- High-grade material
- Smooth handle
- 2.5L and 5L ranges come with a drinking cup



Description	Colour	Size L	Part Number
Cooler jug	Blue	2.5	0776 2419
Cooler jug	High visibility orange	2.5	0194 9245
Cooler jug with tap	Blue	5	0959 8814
Cooler jug with tap	High visibility orange	5	0194 9228
Cooler jug with tap	Blue	12	0247 7724

Plastic Coolers

- Insulated to keep food and drinks cooler for longer
- Tough exterior made for extreme conditions
- 10 Year manufacturers warranty
- Odour resistant
- Ideal for camping, picnics, beach, parties and work sites



Description	Colour	Size L	Part Number
Plastic cooler	Blue	10	0335 2220
Plastic cooler	Blue	25	0293 7217
Plastic cooler	Blue	33	0129 3435
Wheeled cooler	Blue	55	0670 1356

Ice Bricks

- Stays colder for longer than regular ice
- Durable and tough
- Non-toxic saline liquid
- Easy to clean
- Medium ice brick fits inside selected Willow® cooler lids
- Suitable for use with food contact



Description	Colour	Size mL	Part Number
Medium ice brick	Blue	350	0405 7752
Large ice brick	Blue	750	0723 1018

Water Bottles

Chute

- Magnetic handle to keep the cap stowed while drinking
- Half turn cap for easy access
- Angled spout provides an ergonomic drink interface
- All parts are top rack dishwasher safe
- BPA, BPS and BPF Free
- Bottle made from Eastman Tritan™



Chute Mag Water Bottle Oxford
Chute Mag Water Bottle Charcoal

Stainless Steel Insulated Chute

- Double wall vacuum insulated to maintain temperature
- Sweat proof insulation
- 18/8 Stainless Steel with powder coated finish
- Cap top rack dishwasher safe
- Hand wash vessel only



Stainless Steel Insulated Chute Black
Stainless Steel Insulated Chute Navy

Eddy +

- Flip open the bite valve and sip
- Leak proof when closed, spill proof when open
- Cap and vessel dishwasher safe
- Odour and stain resistant
- Lightweight and durable
- Comfortable carry handle



Eddy+ Water Bottle True Blue
Eddy+ Water Bottle Charcoal



Description	Colour	Size L	Part Number	Description	Colour	Size L	Part Number
Chute Mag water bottle	Oxford	1	0165 6144	Stainless steel insulated chute	Navy	1	0134 3531
Chute Mag water bottle	Charcoal	1	0010 2140	Eddy+ water bottle	True Blue	1	0165 6212
Stainless steel insulated chute	Black	1.2	0165 6161	Eddy+ water bottle	Charcoal	1	0165 6195

MJA022 Two Tone High Visibility Reflective Tape Jacket



- 120gsm, 150D, 100% Polyester with 100% Polyester mesh lining
- High visibility reflective tape – Hoop configuration
- Sealed seams
- Concealed hood
- ID concealable partition on right front
- Adjustable cuff tab
- Embroidery access
- Centre front zip with hook and loop fastener closure



Size	Yellow/Navy	Orange/Navy	Size	Yellow/Navy	Orange/Navy
S	0320 1329	0320 1482	3XL	0320 1414	0320 1567
M	0320 1346	0320 1499	4XL	0320 1431	0320 1584
L	0320 1363	0320 1516	5XL	0320 1448	0320 1601
XL	0320 1380	0320 1533	6XL	0320 1465	0320 1618
2XL	0320 1397	0320 1550			

MPA039 Bio Motion Two Tone High Visibility Reflective Tape Trousers



- 120gsm, 150D, 100% Oxford polyester
- High visibility reflective tape – Hoop configuration
- Sealed seams
- Elastic waistband
- Side pockets with press stud closure
- Hem slit at sides
- Waterproof and breathable



Size	Yellow/Navy	Orange/Navy	Size	Yellow/Navy	Orange/Navy
S	0320 1635	0320 1788	3XL	0320 1720	0320 1873
M	0320 1652	0320 1805	4XL	0320 1737	0320 1890
L	0320 1669	0320 1822	5XL	0320 1754	0320 1907
XL	0320 1686	0320 1839	6XL	0320 1771	0320 1924
2XL	0320 1703	0320 1856			

FOOTWEAR

GUMBOOTS

001 Waterproof Non-Safety Gumboots



- Waterproof Weatherseal Boot
- PVC/nitrile compound that is chemical, oil and acid resistant
- Fully removable contoured EVA footbed
- Reinforced ankle, heel, and instep with rear kick-off tip
- Slip and abrasion resistant
- Fully lined
- Wide fit in the calf and foot areas



Size	Black	Size	Black
4	0421 7214	9	0421 7299
5	0421 7231	10	0421 7163
6	0421 7248	11	0421 7180
7	0421 7265	12	0421 7197
8	0421 7282		

024 Waterproof Safety Gumboots



- Waterproof PVC/nitrile compound that is cut and abrasion, chemical, oil and acid resistant
- Wide fit and a heavy-duty tread base for extra stability
- Sole resists clogging & provides superior grip
- Steel toe cap and steel penetration-resistant midsole for maximum protection
- Soft metatarsal pad to reduce pressure and stress on the feet
- Removable Comfort Arch anti-bacterial, washable and breathable footbed
- XRD® Extreme Impact Protection forepart insert and knit lining provides superior comfort
- Two pre-stamped guide lines allow height adjustment



Size	Grey	Size	Grey
5	0229 8119	10	0229 8204
6	0229 8136	11	0229 8221
7	0229 8153	12	0229 8238
8	0229 8170	13	0229 8255
9	0229 8187		

10-105 Penetration Resistant Steel Midsole Safety Gumboots



- Black, waterproof PVC upper with nylon lining
- Penetration resistant stainless steel midsole
- Three trim heights
- Removable footbed for added comfort
- Wide grip tread for optimum traction
- Resistant to solvents, mild acids, alkalis, some chemicals, oils and fats
- Kick off spur for easy removal
- Reinforced ankle, heel and instep



Size	Black/Yellow	Size	Black/Yellow
3	0005 8093	9	0666 1678
4	0005 8076	10	0666 1729
5	0666 1610	11	0666 1763
6	0666 1627	12	0666 1814
7	0666 1644	13	0005 8059
8	0666 1661		

10-100 Safety Gumboots



- Black, waterproof PVC upper with nylon lining
- Three trim heights
- Kick off spur for easy removal
- Removable footbed for added comfort
- Wide grip tread for optimum traction
- Resistant to solvents, mild acids, alkalis, some chemicals, oils and fats
- Reinforced ankle, heel and instep



Size	Black/Yellow	Size	Black/Yellow
3	0005 8144	9	0666 1542
4	0005 8127	10	0666 1559
5	0666 1474	11	0666 1576
6	0666 1491	12	0666 1593
7	0666 1508	13	0005 8110
8	0666 1525		

APPAREL

WET WEATHER

MJP001 Polyester Jacket/Pant Rainset

- 120gsm, 100% Polyester mesh lining
- Sealed seams
- Concealed hood
- Storm flap with press studs closure
- Lower pockets
- Elastic waistband
- Press stud adjustable hem
- Ideal for wet weather



Size	Orange	Yellow	Size	Orange	Yellow
S	0320 3539	0320 3386	3XL	0320 3624	0320 3471
M	0320 3556	0320 3403	4XL	0320 3641	0320 3488
L	0320 3573	0320 3420	5XL	0320 3658	0320 3505
XL	0320 3590	0320 3437	6XL	0320 3675	0320 3522
2XL	0320 3607	0320 3454			

MJA026 PVC Jacket

- PVC on 100% polyester
- Reflective tape – Hoop configuration
- ¾ Length
- Welded seams
- Detachable hood
- Centre front press stud closure
- Right side pocket



Size	Yellow	Size	Yellow
XS	0152 8644	2XL	0320 3148
S	0320 3080	3XL	0320 3165
M	0320 3097	4XL	0320 3182
L	0320 3114	5XL	0320 3199
XL	0320 3131	6XL	0320 3216

MPA046 PVC Trousers with Tape

- PVC on 100% polyester
- Reflective tape – Hoop configuration
- Welded seams
- Elastic waistband
- Press stud hem adjustment
- Ideal for wet weather



Size	Yellow	Size	Yellow
S	0320 3233	3XL	0320 3318
M	0320 3250	4XL	0320 3335
L	0320 3267	5XL	0320 3352
XL	0320 3284	6XL	0320 3369
2XL	0320 3301		

892 65190 Utility PVC 400mm Safety Gumboots

- Nylon liner provides absorbency and is easily washable
- PVC/Nitrile waterproof boot
- Kick off lug on heel allows for easy removal
- Pattern on sole gives superior slip resistance and resists cracking
- Red sole and black shaft
- Steel toecap
- Oil and acid resistant
- 300° Heat resistant sole



Size	Black	Size	Black
5	0144 2338	10	0144 2423
6	0144 2355	11	0144 2440
7	0144 2372	12	0144 2457
8	0144 2389	13	0144 2466
9	0144 2406		

892 66080 Utility PVC 400mm Non-Safety Gumboots

- Black 400mm knee high non-safety PVC waterproof boot
- Natural nylon liner provides coolness, absorbency and is easily washable
- Kick Off lug on the heel to allow for easy removal
- Pattern on sole gives superior slip resistance
- Oil and acid resistant



Size	Black	Size	Black
5	0144 2474	9	0144 2542
6	0144 2491	10	0144 2559
7	0144 2508	11	0144 2576
8	0144 2525	12	0144 2593

SITE SAFETY

TRAFFIC MANAGEMENT

Traffic Cones

- 3M™ 3340 Retro reflective collar on cone for night time visibility
- PVC cone body
- Recycled PVC base
- Stackable for easy transit and storage
- Suitable for work zone safety and mining applications



Size mm	Type	Part Number
450	Reflective	0165 6552
700	Reflective	0165 6586

If using for State or Federal roads, check your local Department of Transport requirements

T-Top Bollards

- 3M™ 3340 retro reflective collar on stem for night time visibility
- Recycled solid rubber base
- T-top allows for safety bunnings, tapes and plastic chains to section off exclusion zones, directing traffic/pedestrians
- Suitable for work zone safety and mining



Description	Height mm	Weight kg	Part Number
Stem & base	1130	6	0165 6484

If using for State or Federal roads, check your local Department of Transport requirements

Barrier Board

- Extruded Polyethylene (PE) for longer life
- Light and sturdy
- Reflective for night time visibility
- Length: 2.5m
- Board and legs sold separately
- Ideal for separating people from hazardous and dangerous work areas or emergency situations



Description	Colour	Part Number
Barrier board	Yellow/Black	0103 0003
Barrier board legs	Yellow	0473 5161

PEDESTRIAN CONTROL - BARRIERS

Barrier Tapes – Standard

- Lightweight and easy to use
- Roll up for long term use
- Easily recognised warning of hazards or restricted areas, where safe separation of people and work is required
- Suitable for construction, mining and general industry



Description	Colour	Width mm	Length m	Part Number
Danger	Red/White	75	50	0005 8378

Barrier Tapes – Standard

- Lightweight and easy to use
- Roll up for long term use
- Easily recognised warning of hazards or restricted areas, where safe separation of people and work is required
- Suitable for construction, mining and general industry



Description	Colour	Width mm	Length m	Part Number
Stripe	Red/White	75	50	0067 8259

TRAFFIC MANAGEMENT LOCKOUT – SAFETY TAGS

Lockout Tags

- Writeable surface for recording name, department, completion time and other details
- Cable ties sold separately
- Suitable for mining, power generation, oil and gas, manufacturing and utility industries

Large Lockout Tags

- Tag size: W100 x H150mm
- Packs of 10 tags
- 6mm Diameter hole

PROSAFE



Description	Material	Std Pack	Part Number
Danger Do Not Remove/Do Not Operate	POLY	10	0304 4028

FIRST AID

Vehicle First Aid Kits

- Also available in a hard case and zippered, 600D/PVC case
- Suitable for the glove box, cupboard or suitcase
- Ideal kit for every vehicle



Mfr No.	Description	W x D x H mm	Part Number
848794	Vehicle & low risk first aid kit – Soft case red	135 x 65 x 210	0447 4577

SPILL CONTAINMENT – PORTABLE

Boom Spill Response

- Absorbs only oil based (hydrocarbon) liquids on land or water
- Will not absorb water based liquids
- Made from loose or shredded absorbent material in a tubular shaped fabric cover
- Specifically designed for containing and cleaning up oil based spills on water
- Can be linked together using built in connectors
- Absorbs up to 65L
- Ideal for oil and fuel spills on water or in wet environments

PROSAFE



Mfr No.	Description	Dimensions	Std Pack	Part Number
404059	Sorbent boom	20cm x 3m	1	0195 0571

SPILL KITS & SORBENTS – GENERAL PURPOSE

General Purpose Sorbents

- Absorbs both oil and water based liquids
- Ideal for use where both oil and water based liquids may be spilt
- Made from loose or shredded absorbent material in a tubular shaped fabric cover
- Absorbs up to 3.8L for 7.6cm x 1.2m sock

PROSAFE



Mfr No.	Description	Dimensions	Std Pack	Part Number
404057	Sorbent sock	7.6cm x 1.2m	1	0195 0384

SPILL CONTROL & CONTAINMENT

Modern Sandbag

- Lightweight and portable sandless sandbags that are activated by water
- Protect your property against flash flooding and accidental water damage
- Super absorbency enables them to soak up to 22L of water
- Five year plus shelf life
- Fully biodegradable therefore environmentally friendly
- Comes complete with 20 individual sandless sandbags in a box



Mfr No.	Description	Colour	Carton Qty	Part Number
AAFLSX	Sandless sandbags	White	20	0993 2512

EMERGENCY EYE & FACE WASHES

Tobin Eyewash Systems

- Excellent first response for flushing contaminants and irritants from the eyes
- Sterile saline solution
- 1L Bottle provides approximately 3min of flushing time
- Three years shelf life from date of manufacture



Mfr No.	Description	Size	Part Number
TOB121	Pocket eyewash	200ml Bottle	0790 3409

FIRE FIGHTING EQUIPMENT

ABE Powder Fire Extinguishers

- Distinguished by a white coloured band
- Ideal for extinguishing the following types of fire:
 - Class A – Paper, textiles, wood, most plastics and rubber
 - Class B – Flammable liquids
 - Class E – Electrically energised equipment
- Complies with AS/NZS 1841:2007



Mfr No.	Description	Size kg	Part Number
FW1.0ABE	ABE Powder fire extinguisher	1	0423 1664
FW4.5ABE	ABE Powder fire extinguisher	4.5	0452 5832
FW9.0ABE	ABE Powder fire extinguisher	9	0452 5849

Fire Blankets

- Packaged in a single use, red coloured, hangable bag
- Ideal for extinguishing Class F fires – Cooking oils and fats
- Complies with AS/NZS 3504:2006



Mfr No.	Size m	Part Number
FB1818	1.8 x 1.8	0452 5985

HEAD & FACE PROTECTION

FACE SHIELDS & VISORS

Armadillo Face Shield

- Lift up design and can be used in conjunction with half mask respirators and neckband style earmuffs
- Visor design incorporates chin guard
- Browguard includes a ratchet mechanism harness with sweatband
- Complies with AS/NZS 1338.1:2012 – High impact protection, hot solids and splash resistance

PROSAFE



Mfr No.	Description	Visor Colour	Lens Coating	Part Number
AS104AF	Complete face shield	Clear	Anti-fog/Anti-scratch	0132 7775

HARD HATS

630 Type 1 Vented Hard Hats

- Type 1 vented – Lightweight ABS material
- Short peak provides improved field of vision
- Vents on top, front and rear of the hard hat allow maximum cooling for wearer comfort
- Six point suspension harness with adjustable pin lock for size adjustment
- 30mm Slots for attachment of accessories
- Suitable for general industrial, construction and mining applications where danger exists from falling objects
- Complies with AS/NZS 1801:1997 – Type 1 Industrial Helmet

PROSAFE



Mfr No.	Description	Colour	Part Number
630 ORN	Vented – Type 1	Orange	0228 4179
630 BLU	Vented – Type 1	Blue	0228 4162

HF49 Type 3 Bush Fireman's Hard Hat

- Type 3 polycarbonate material
- Flame resistant neck flap offers protection from embers and radiant heat
- Fitted with neck flap, elastic chin strap and reflective tape as standard
- Custom logo options available
- Suitable for high temperature tasks including fire fighting, forestry and emergency response
- Certified to AS/NZS 1801:1997

3M



Mfr No.	Description	Colour	Part Number
HF49:WH	Bushfire hard hat with chin strap	White	0431 0663

Visor carrier and visors sold separately

HF44 Type 3 Bush Fireman's Hard Hats

- Wide brim type 3 polycarbonate material
- Flame resistant neck flap offers protection from embers and radiant heat
- Fitted with neck flap, elastic chin strap and reflective tape as standard
- Custom logos available
- Suitable for high temperature tasks including fire-fighting, forestry and emergency response
- Certified to AS/NZS 1801:1997

3M



Mfr No.	Description	Colour	Part Number
HF44:WH	Bushfire hard hat with elastic chin strap	White	0431 0000

RESPIRATORY

Disposable Respirators

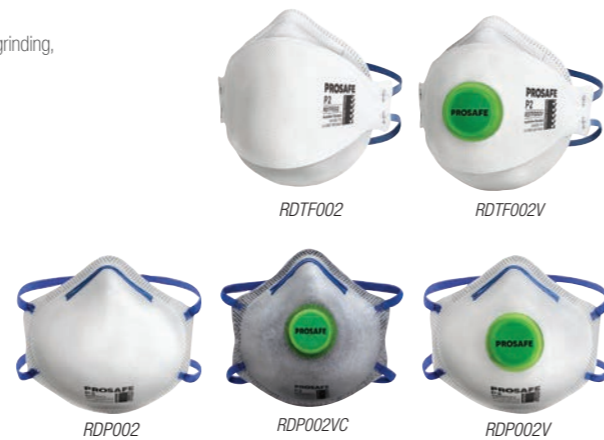
RDTF002 & RDTF002V

- Trifold design for comfort during wear
- Flat fold for convenient transport and storage
- Soft rubber nose seal for comfort
- Enclosed aluminium adjustable nosepiece for custom fit and secure seal
- Twin rubber headbands for stability
- Individually packed for hygienic storage and transportation
- Ideal for use against both mechanically and thermally generated particulates through sanding, dusting, grinding, or combustion and low toxicity mists that do not produce harmful gases or vapours
- Complies with AS/NZS 1716:2012 Respiratory Protective Equipment

RDP002, RDP002VC & RDP002V

- Pre-moulded contour design for increased comfort and fit
- Closed foam rubber nose seal to provide better fit and seal over nose ridge and to reduce leakage
- Plastic coated wire adjustable nose bridge for secure seal and fitting to different facial profiles
- Staple free welded twin elastic headbands
- Carbon layer to help filter out nuisance levels of odours (RDP002VC and RDP002V only)
- Exhalation valve to improve comfort by assisting in expelling hot air and moisture
- Ideal for protection against mechanically and thermally generated particles from welding, soldering, sawing, sanding, grinding and crushing
- Complies with AS/NZS 1716:2012 Respiratory Protective Equipment

PROSAFE



Mfr No.	Description	Pack Size	Part Number	Mfr No.	Description	Pack Size	Part Number
RDTF002	Trifold – Non-valved	20	0165 7232	RDP002VC	Cupped – Valved	10	0201 9829
RDTF002V	Trifold – Valved	10	0165 7215	RDP002V	Cupped – Valved	10	0443 1805
RDP002	Cupped – Non-valved	10	0443 1788				

EYE PROTECTION

SAFETY GOOGLES

Impact General Purpose 1010

- Protection against dust and medium energy flying particles
- Direct vented for maximum ventilation and user comfort
- Flexible Polyvinyl Chloride (PVC) frame with broad face flange
- Suitable for manufacturing, construction and mining industries
- Certified to AS/NZS 1337.1:2010 – Medium impact protection

PROSAFE



Frame Colour	Lens Colour	Lens Coating	Part Number
Clear	Clear	Anti-fog/Anti-scratch	0076 1804

uvex bush fire goggles type 1, type 2 & type 3

- Ventilation system design based on NSW RFS smoke hut test results
- Resists smoke penetration whilst allowing humid air to escape
- Helmet and other Personal Protective Equipment (PPE) compatible
- Optimised air volume minimises eye damage from radiant heat
- uvex supravision excellence coating (anti-fog/anti-scratch outside)
- Suitable for bush fire fighting, back burning and protection from splashes
- Complies with NSW RFS as Type 1, Type 2 & Type 3 – Heat resistant and flame retardant
- Complies with AS/NZS 1337.1 – Medium impact approved

9302-342 & 9308-342

- Ultrasonic fire goggles

901-342

- Ultraviolet fire goggles



9302-342 – Clear



9301-342 – Clear



9308-342 – Clear

Mfr No.	Description	Frame Colour	Foam Liner	Lens Material	Lens Colour	Lens Coating	Part Number
9302-342	T & BVR* – Type 1	Red	–	Polycarbonate	Clear	uvex sv excellence	0290 1346
9301-342	T & BVC* – Type 2	Red	Open cell	Polycarbonate	Clear 80% + VLT	uvex sv excellence	0776 0762
9308-342	T & BVR* – Type 3	Red	–	Polycarbonate	Clear 80% + VLT	uvex sv excellence	0333 0376

*T & BVC: Top and Bottom Vent closed – Sides open

Pilot 2 Fire

- Co-injected and ventilated frame guarantees unequalled adaptability and comfort
- Polycarbonate/Thermoplastic Rubber (PC/TPR) twin/material frame
- Adjustable strap
- Fits over prescription glasses
- Pilot 2 fire is designed to fit comfortably under fire fighter helmets
- PILOFCSP features new CSP lens – New innovative coating is an effective solution for all activities that alternate exposure between bright light and low light
- Platinum® coating – High performance anti-fog/anti-scratch coating system applied on both sides of lens
- Suitable for chemical splash protection, cutting, spray, dust protection, acid and alkaline handling, wood and metal work
- Temperature Resistance tested at 200°C (Frame, Lens, Strap)



Clear/Red



CSP/Red

Mfr No.	Description	Frame Colour	Lens Colour	Lens Coating	Part Number
1689119	Fire	Red	Clear	Platinum®	0406 8618
PILOFCSP	Fire	Red	CSP	Platinum®	0018 9537

*TVC: Top Vent Closed



Our focus is on delivering value to our customers and building a true partnership by understanding and meeting your needs.

Blackwoods

Ultim8 Goggle

- Sealed Thermoplastic Rubber (TPR) rubber
- Adjustable strap
- Suitable for most advanced protection for extreme work environments – including cold, heat and damp environments
- Medium impact and chemical splash approved
- Suitable for oil, gas and mining industries
- Certified to AS/NZS 1337.1:2010



Mfr No.	Frame Colour	Lens Colour	Lens Coating	Part Number
ULTIPISO	Black	Clear	Platinum®	0031 6289
ULTIPFSO	Black	Smoke	Platinum®	0054 0417

uvex ultrasonic

- Wide panoramic field of vision
- Soft, non-allergenic TPE naturally moulds to individual face shapes
- Concealed ventilation reduces moisture build up and aids airflow
- Wide adjustable headband
- Dust and splash resistant
- Can be worn over most prescription glasses
- Replacement lens available
- uvex supravision THS coating (anti-fog both sides)
- Suitable for emergency services, mining, manufacturing, engineering, refineries, foundries, oil and gas and transportation industries
- Complies with AS/NZS 1337.1 – Medium impact approved



Mfr No.	Description	Lens Material	Lens Colour	Lens Coating	Part Number
9302-390	TVR*	Polycarbonate	Clear 80% + VLT	uvex sv THS	0652 0867

*TVR: Top Vent Reduced

SAFETY SPECTACLES

Law

- Lightweight ergonomic design with Thermoplastic Rubber (TPR) temple arm pads for all day comfort and grip
- Excellent ocular area coverage
- Metal free hinge design for environments where conductivity may be a hazard
- Clear lens – Anti-fog/Anti-scratch coating on both sides of the lens
- Smoke/Grey lens – Hard coat finish on both sides of the lens for high level scratch resistance
- Clear/Silver flash – Reduces sun glare, ideal for working between indoor and outdoor
- Smoke/Blue flash – Provides protection against sun glare, for outdoor and sunny environments
- Suitable for a wide range of industries



Clear



Smoke/Grey



Clear/Silver Flash



Smoke/Blue Flash

Frame Colour	Lens Colour	Lens Coating	Part Number
Clear	Clear	Anti-fog/Anti-scratch	0773 6486
Black	Smoke/Grey	Hard coat	0773 6503
Grey	Smoke/Blue flash	Mirror	0773 6520
Clear	Clear/Silver flash	Mirror	0773 6537



uvex pheos cx2

- X-branded safety spectacles with a modern, sporty design
- Comfortable protection with X-tended eye shield
- X-twist side arm technology delivers non-slip fit
- Duo-spherical lens delivers excellent field of vision
- Excellent ventilation
- Can easily be combined with other worn PPE
- uvex supravision THS coating (anti-fog both sides)
- uvex supravision excellence coating (anti-fog inside/anti-scratch outside)
- Suitable for manufacturing, construction, mining, food, engineering, warehousing and transport industries
- Complies with AS/NZS 1337.1 – Medium impact approved



Clear



Grey



9198-400 – Clear



9198-401 – Grey

Mfr No.	Frame Colour	Lens Colour	Lens Coating	Part Number
9198-202	White/Black	Clear	uvex sv excellence	0369 3105
9198-200	White/Black	Grey 14% VLT	uvex sv excellence	0369 3071
9198-400	Red/Grey	Clear	uvex sv THS	0369 3037
9198-401	Red/Grey	Grey 14% VLT	uvex sv THS	0369 3054

uvex pheos

- Modern design with excellent coverage and peripheral vision
- Soft, non-slip ear pieces prevent pressure points
- Arms with advanced ventilation system work with head movement
- No metal parts
- Can easily be combined with other worn PPE
- Vented closed cell foam guard models provide additional dust protection
- uvex supravision excellence coating (anti-fog inside/anti-scratch outside)
- uvex supravision THS coating (anti-fog both sides)
- Suitable for manufacturing, mining, oil and gas, engineering, warehousing, transport, food and construction industries
- Complies with AS/NZS 1337.1 – Medium impact approved



9192-304G



9192-305G



9192-310



9192-311

9192-304G & 9192-305G (with guard)

- Good for working environments with dust exposure

Mfr No.	Frame Colour	Lens Colour	Lens Coating	Part Number
9192-304G	Black/Green	Grey 23% VLT	uvex sv excellence	0194 2581
9192-305G	Black/Green	Clear 80% VLT	uvex sv excellence	0194 2598
9192-310	Grey/Grey	Clear	uvex sv THS	0099 1533
9192-311	Grey/Grey	Grey 12% VLT	uvex sv THS	0099 1550

'G' at the end of the model code stands for 'Guard'

Ness

- Ultra wrap around design and comfortable panoramic vision



Clear



Smoke

Mfr No.	Frame Colour	Lens Colour	Lens Coating	Part Number
NESSPSI	Black	Clear	Anti-fog/anti-scratch	0009 1124
NESSPSF	Black	Smoke	Anti-fog/anti-scratch	0009 1107

Rush+

- Ultra sporty design with its co-injected and ultra flexible temples
- Adjustable Polyvinyl Chloride (PVC) and non-slip nose bridge
- Platinum® coating – High performance anti-fog/anti-scratch coating system applied on both sides of clear, smoke and twilight lens
- Gasket kit with strap also available
- Suitable for assembly, production and process, emergency response, driving and laboratory work



Clear



Smoke

Mfr No.	Frame Colour	Lens Colour	Lens Coating	Part Number
1662301	Red/Black	Clear	Platinum®	0246 6096
1662302	Red/Black	Smoke	Platinum®	0246 6113

Rush+ Small

- Ultra sporty design with its co-injected and ultra flexible temples
- Adjustable Polyvinyl Chloride (PVC) and non-slip nose bridge
- Platinum® coating – High performance anti-fog/anti-scratch coating system applied on both sides of lens
- Suitable for assembly, production and process, emergency response, driving and laboratory work



Clear – Blue/Black



Smoke – Blue/Black



Mfr No.	Frame Colour	Lens Colour	Lens Coating	Part Number
1672301	Blue/Black	Clear	Platinum®	0287 8601
1672302	Blue/Black	Smoke	Platinum®	0287 8618

'G' at the end of the model code stands for 'Guard'

HEARING PROTECTION

EARMUFFS

5000 & 7000 Series

- Lightweight
 - Design ensures pressure is evenly dispersed promoting day long use
 - Durable construction ideal for use in extreme work environments
 - Suitable for high noise environments such as heavy industries, construction and manufacturing
- 5000**
- Ideal for use in noise levels 100 – 105dB(A)
- 7000**
- Ideal for use in noise levels 105 – 110dB(A)



EM900

EM9180



Mfr No.	Description	SLC80 dB	Class	Part Number
EM900	5000 Series headband – High visibility yellow	25	4	0547 8903
EM9180	7000 Series headband – High visibility orange	27	5	0547 8920

EARPLUGS – METAL DETECTABLE

Torpedo Metal Detectable Earplugs

- Single use
- Made from PU foam containing metal ball with PVC cord
- 3mm Copper ball for metal detection (Subjective to metal detector performance and capabilities)
- Classic bullet shape
- Earplug size: 2.5cm(L) x 1.2cm(W) x cord 64cm(L)



Mfr No.	Description	SLC80 dB	Class	Pairs Per Box	Part Number
REP301-C	Corded	29	5	100	0237 4020
REP301-CD	Corded	29	5	100	0237 4020

EARPLUGS – DISPOSABLE

Torpedo

- Single use
- Made from PU foam, corded style with PVC cord
- Classic bullet shape
- Earplug size: 2.5cm(L) x 1.2cm(W)
- Corded style cord length: 64cm(L)



Corded

Uncorded



Mfr No.	Description	SLC80 dB	Class	Pairs Per Box	Part Number
REP301-C	Corded	29	5	100	0237 4003
REP301	Uncorded	29	5	200	0237 3986

HAND PROTECTION

CHEMICAL RESISTANT & LIQUID RESISTANT – PVC

PVC Premium – 806

- Polyvinyl Chloride (PVC) full coat glove with cotton jersey lining for comfort
- Textured palm and back of hand for additional grip
- Ideal for aeronautics, construction, manufacturing, masonry and petrochemical industries
- Complies with EN 388:2016, EN 347-1:2016 and EN 374-5:2016



Mfr No.	Length mm	Size	Part Number	Mfr No.	Length mm	Size	Part Number
806-27-8	270	8	0784 1478	806-27-10	270	10	0784 1512
806-27-9	270	9	0784 1495	806-27-11	270	11	0784 1529



GENERAL PURPOSE – OILY WORK

Predator 3/4 Coat – W9780

- ActiFresh 100% cotton jersey liner for hygiene and comfort
- Medium weight ¾ coat nitrile for protection and durability
- Cotton blend wrist for comfortable, snug fit and to prevent dirt from entering
- Ideal for building and construction, forestry and metal fabrication industries
- Complies with EN 388:2016

PROSAFE



Mfr No.	Size	Part Number
W9780S	S	0522 5977
W9780M	M	0085 9384
W9780L	L	0117 9586
W9780XL	XL	0054 6363

MaxiDry® – 56-426

- LIQUtech® technology provides resistance to liquids
- Ultra lightweight synthetic coating combined with a seamless knit liner provides excellent comfort, sensitivity, fit and dexterity
- Locking cuff and elasticated support in the wrist area for a close and snug fit
- GRIPtech® technology micro-cup non-slip grip finish on the palm allows for a controlled and superior grip in oily, wet applications
- Excellent resistance to hydrocarbons and caustics
- Dermatologically accredited by the Skin Health Alliance ensuring a fresh out of the pack experience

EN Mechanical & Chemical Hazards

- Complies with EN 388:2016 – AS/NZS 2161.3:2005
- Complies with EN 374-1:2003



Mfr No.	Size	Part Number
56-426-07V	7	0218 6820
56-426-08V	8	0218 6837
56-426-09V	9	0218 6854
56-426-10V	10	0218 6871
56-426-11V	11	0218 6888

GENERAL PURPOSE – DRY WORK

Ultratech Latex Nylon – W9680RFL

- Seamless 15 gauge liner
- Textured latex palm coat for excellent grip even with wet or slippery items
- Suitable for grip in wet environments
- Ideal for assembly, glass handling, manufacturing and shipping industries
- Complies with EN 388:2016

PROSAFE



Mfr No.	Size	Part Number
W9680RFLS	S	0674 0184
W9680RFLM	M	0673 3826
W9680RFLSL	L	0673 3843
W9680RFLXL	XL	0674 0235
W9680RFLS2XL	2XL	0674 0286

MaxiFlex® Ultimate™ with AD-APT® – 42-874

- AD-APT® cooling technology keeps your hands cool, dry and productive
- AIRtech® technology delivers 360° breathability
- DURAtech® coating provides outstanding durability
- ERGOtech® technology provides a comfortable fit reducing hand fatigue while maximising dexterity and flexibility
- Also available in high visibility yellow (42-874FY)
- Dermatologically accredited by the Skin Health Alliance ensuring a fresh out of the pack experience

EN Mechanical Hazard

- Complies with EN 388:2016 – AS/NZS 2161.3:2005



Mfr No.	Size	Part Number
42-874-05	5	0306 2643
42-874-06	6	0306 2660
42-874-07	7	0306 2677
42-874-08	8	0306 2694
42-874-09	9	0306 2711
42-874-10	10	0306 2728
42-874-11	11	0306 2745
42-874-12	12	0306 2762

THERMAL PROTECTION GLOVES – HOT/COLD

ActivArm® 80-600

- High performance Kevlar® cut protection
- Crinkle finish latex coating for excellent wet and dry grip
- Ergonomic dip line for reduced hand fatigue
- Fully coated thumb for additional protection and durability
- Suitable for automotive, building, construction, mining, metal fabrication, oil and gas industries

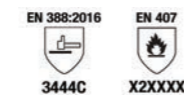
EN Mechanical Hazard

- Complies with EN 388:2003 – AS/NZS 2161.3:2005

EN Heat & Flame Hazard

- Complies with EN 407:2004 – AS/NZS 2161.4:1999

Ansell

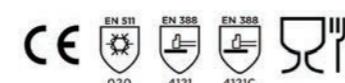


Mfr No.	Size	Part Number
80-600-7	S	0792 2313
80-600-8	M	0792 2330
80-600-9	L	0792 2347
80-600-10	XL	0792 2364

PowerFlex 80-409 Nitrile Fully Coated Cold Resistant Gloves

- Optimum balance between comfort, dexterity and grip
- Waterproof and wind-resistant nitrile coating with warm terry loop acrylic thermal liner provides excellent insulation against the cold
- Rough nitrile coating finish provides superior grip in wet conditions
- Elastic knit wrist provides comfortable fit
- Suitable for food applications
- EN Cold Hazard
- Complies with EN 511:2006 – AS/NZS 2161.5:2005

Ansell



Mfr No.	Size	Part Number
80409080	8	0300 2854
80409090	9	0300 2871
80409100	10	0300 2888

ActivArm® 80-813

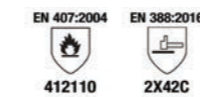
- Thin knitted liner, featuring Ansell's Zonz™ Knit technology which provides excellent dexterity
- Soft foam coating provides excellent grip in wet, oily and dry conditions, reducing slippage and hand tension
- Combines high levels of flame resistance and cut protection into one comfortable, ergonomic design
- Ideal for wet, oily and dry applications

EN Mechanical Hazard

- Complies with EN 388:2016 – AS/NZS 2161.3:2005

EN Heat & Flame Hazard

- Complies with EN 407:2004 – AS/NZS 2161.4:1999



Mfr No.	Size	Part Number
80813060	XS	0010 5527
80813070	S	0010 5544
80813080	M	0010 5561
80813090	L	0010 5578
80813100	XL	0010 5595
80813110	2XL	0010 5612

Caution: This product contains natural rubber latex which may cause allergic reactions in some people

MaxiDry® Zero™ – 56-451

- Brings comfort and liquid repellence together and combines them with THERMtech® technology to offer thermal resistance with a coating designed for temperature down to -30°C
- THERMtech® uses cold resistant yarns and fibres to ensure high thermal insulation properties without sacrificing flexibility, dexterity and comfort
- GRIPtech® ensures superior non-slip grip in oily and wet conditions
- LIQUtech® splash resistance is delivered through a waterproof coating
- Ideal for cold room storage, general maintenance and work in a cold environment and handling frozen food produce
- FDA Compliant to CFR Title 21 Part 177
- Complies with EN 388:2016 – AS/NZS 2161.3:2005
- Complies with EN 511:2006 – AS/NZS 2161.5:1998



Size	Part Number	Size	Part Number
7	0354 0122	10	0354 0173
8	0354 0139	11	0354 0190
9	0354 0156		

CUT RESISTANT

Kevlar® Ultratech – W9693

- Seamless 13 gauge Kevlar liner for high level abrasion and good cut resistance
- Black nitrile palm coating for wear resistance and grip in both dry and light oil applications
- Good dexterity due to spandex yarn content
- Excellent abrasion resistance
- Ideal for automotive, glass handling and metal fabrication industries
- Complies with EN 388:2016

PROSAFE



Mfr No.	Size	Part Number
W9693S	S	0419 5284
W9693M	M	0617 2877
W9693L	L	0617 2894
W9693XL	XL	0617 2928

Ansell



MaxiCut® Ultra™ – 44-3745

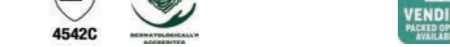
- CUTtech® high performance yarns and fibres offer cut protection, flexibility, dexterity and comfort
- AIRtech® technology delivers 360° breathability
- Level Cut C protection with only 1mm thickness
- Dermatologically accredited by the Skin Health Alliance ensuring a fresh out of the pack experience
- Suitable for maintenance, logistics and warehousing, assembly, glass handling and sharp edged metal sheets

EN Mechanical Hazard

- Complies with EN 388:2016 – AS/NZS 2161.3:2005

EN Heat & Flame Hazard

- Complies with EN 407:2004 – AS/NZS 2161.4:1999



Mfr No.	Size	Part Number
44-3745-06	6	0256 6923
44-3745-07	7	0256 6940
44-3745-08	8	0256 6957
44-3745-09	9	0256 6974
44-3745-10	10	0256 6991
44-3745-11	11	0256 7008
44-3745-12	12	0256 7025

uvex C500 – wet and wet plus

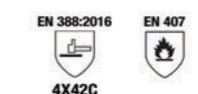
- Excellent grip when working in damp and wet environments
- Highest level cut protection (level 5/C) and outstanding wearer comfort with uvex Bamboo TwinFlex® technology
- High breathability due to higher moisture absorption with uvex climazone Technology
- High performance elastomer (HPE) coating with high abrasion resistance ensuring long life in service
- Complies with EN 388:2003 (4 5 4 2)
- Complies with EN 388:2016 (4 X 4 2 C)
- In accordance with EN 407, these models are suitable for contact warmth up to +100 °C

C500 Wet (HX60492)

- Palm and fingertips HPE coating

C500 Wet Plus (HX60496)

- Palm and ¾ of the back of the hand HPE coating



Mfr No.	Size	Wet	Mfr No.	Size	Wet Plus
HX60492F0	7	0771 7361	HX60496F0	7	0979 4387
HX60492F1	8	0771 7378	HX60496F1	8	0979 4404
HX60492F2	9	0771 7395	HX60496F2	9	0979 4421
HX60492F3	10	0771 7412	HX60496F3	10	0979 4438
HX60492F4	11	0058 5046	HX60496F4	11	0979 4455

WELDING GLOVES

WeldTEC TIG Welding Glove – 25TIG/GOAT

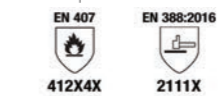
- Goatskin palm for increased dexterity and comfort
- Reinforced layer on the back of the second and third fingers
- Padded side palm saddle increases comfort and abrasion resistance on high wear point of the palm
- Sewn with heat resistant thread to prevent thread failure due to contact with flames, sparks and high temperatures
- Ideal for TIG welding, as well as grinding, brazing, metal fabrication and maintenance

EN Mechanical Hazard

- Complies with EN 388:2016

EN Heat & Flame Hazard

- Complies with EN 407:2004



Mfr No.	Size	Part Number
25TIG/GOAT-P/M	M	0408 1980
25TIG/GOAT-P/L	L	0408 2014
25TIG/GOAT-P/XL	XL	0408 1997

PROSAFE





Blackwoods

- | | | |
|--|--|---|
|  Abrasives |  Adhesives, Sealants and Fillers | |
|  Automotive |  Bearings |  Building and Construction Materials |
|  Clothing |  Electrical |  Eye Protection |
|  Fasteners and Fixings |  Footwear |  Gasket Materials, Packing and Fluid Sealing |
|  General Tapes and Packaging Supplies |  Hand Protection |  Hardware |
|  Head and Face Protection |  Health and Wellbeing |  Hearing Protection |
|  Hose and Hose Fittings |  Hygiene and Cleaning |  Ladders and Platforms |
|  Lifting and Rigging |  Lubricants and Lubrication Equipment |  Manual Handling and Storage |
|  Office, Stationery and Kitchen |  Paints, Marking and Spray Equipment |  Pipe and Tube Fittings |
|  Power Tools |  Power Transmission |  Pumps |
|  Retail Merchandising |  Safety - PPE |  Safety - Site and Environmental |
|  Steels and Metals |  Tools - Cutting, Threading and Carbide |  Tools - Hand, Measuring and Precision |
|  Tools - Machinery, Workshop |  Valves and Flow Control |  Welding and Gas |